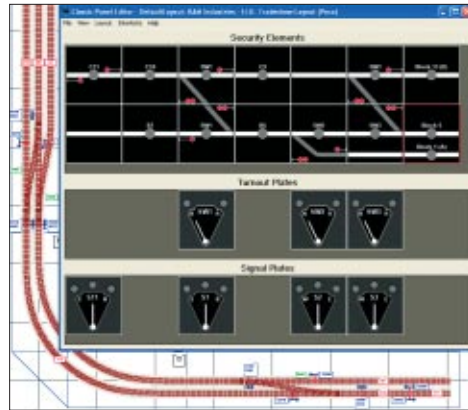
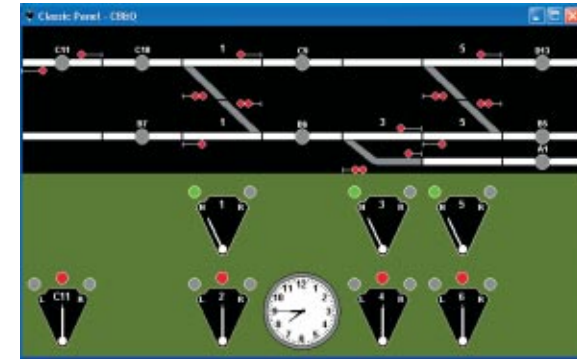


# Classic Panel®

“Why play with toys when you can use the prototype?”<sup>SM</sup>



Classic Panel Editor and a diagram of the layout being edited



Classic Panel Run time with fast clock

Classic Panel is a member of KAM's Train Tools® application software family and is a visual layout display panel that was in use in the American Railroads in the 1940. Classic Panel Suite includes Classic Panel (run time), Classic Panel visual editor, Engine® Commander and Train Server® Interface. The Train Server software interfaces to your model railroad command station and other Train Tools software applications. Classic Panel software is Windows XP and Windows.net compatible and is networked enabled.

Classic Panel allows a user to act as the Dispatcher to control the routing of trains. A “Dispatcher” resides in a centralized office and is responsible for granting/denying permission to locomotives to pass through sections of track with safety in mind so as to avoid collisions or derailments.

Track sensors out in the field are used to determine where a train is located and illuminate a light on a graphical representation of the layout in a control panel viewed by the Dispatcher. The Dispatcher uses this train location information to remotely control the track turnout directions, as well as the color of signals seen by the train operators.

Classic Panel® Software is designed to emulate a 1940-style dispatcher panel, but more importantly, it's designed to make it simple to control your DCC model railroad layout. Properly controlling the individual lights on track signal posts in order to safely direct locomotive travel without derailments or collisions can be tricky using low-level DCC commands. (For example, it's easy to inadvertently set invalid LED states such as granting two opposing trains permission to collide head on.) Classic Panel encapsulates the complex logic for signaling, turnouts, and interlocking (which will

be explained later) so that you can concentrate on managing the entire layout instead of micro-managing the low-level DCC commands.

Classic Panel Software was designed based on user feedback and user experience on other dispatching products. Classic Panel Software is a professionally designed software package that is easy to configure and easy to use. Classic Panel Software offers these features

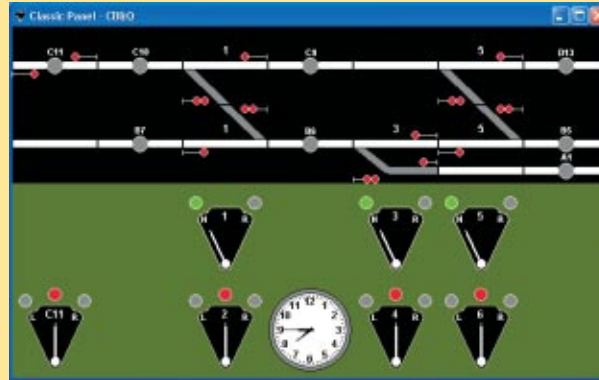
- Advanced visual layout editor to easily configure a layout for point-and-click DCC control.
- Ability to print a summary report containing your layout configuration and all DCC settings.
- An easy to use application for controlling your layout without having to write software scripts to micro-manage low-level DCC commands.
- Multiple levels of interlocking support.
- Easy to use and powerful tools to debug and troubleshoot your layout configuration.
- Shared real-time DCC status information across any number of Train Server enabled applications.
- Integrated support for Sensor and Signal Decoders (SEBC as well as CMRI devices).

Latest Classic Panel information and evaluation software may be downloaded from [www.kamind.com](http://www.kamind.com). Experience the feeling of dispatching your model railroad with a 1940 dispatchers panel, and you see why we say “Why Play with toys when you can use the prototype”.

# 1940 Union Switch and Signal Panel

for **DCC...**

**Classic Panel**<sup>®</sup> **includes**  
**Engine Commander**<sup>®</sup>  
**& Train Server**<sup>®</sup>



*Control signals & turnouts  
with an electronic 1940  
dispatchers panel replica*

*Easy to use: no scripting  
or programming required*

*Visual Layout editor included*

**only**  
**\$99**  
[www.kamind.com](http://www.kamind.com)



**KAM Industries 2373 NW 185th Ave #416, Hillsboro, OR 97124 | (503) 291-1221 | Email: [sales@kamind.com](mailto:sales@kamind.com)**

Classic Panel, Engine Commander, Train Server, and Kamind are registered trademarks of KAM Industries, US and International patents 6065406, 6267061, 6877699, Ger 29923834.2, GB 2353228, CDN 2330931 and others pending. KAM Industries is a division of KAMIND Associates, Inc. Copyright © 1991-2005 KAM Industries. All rights reserved.



**KAM Industries 2373 NW 185th Ave., #416, Hillsboro, OR 97124-7076 Fax/Phone: (503) 291-1221**  
**WEB: <http://www.kamind.com> email: [sales@kamind.com](mailto:sales@kamind.com)**