

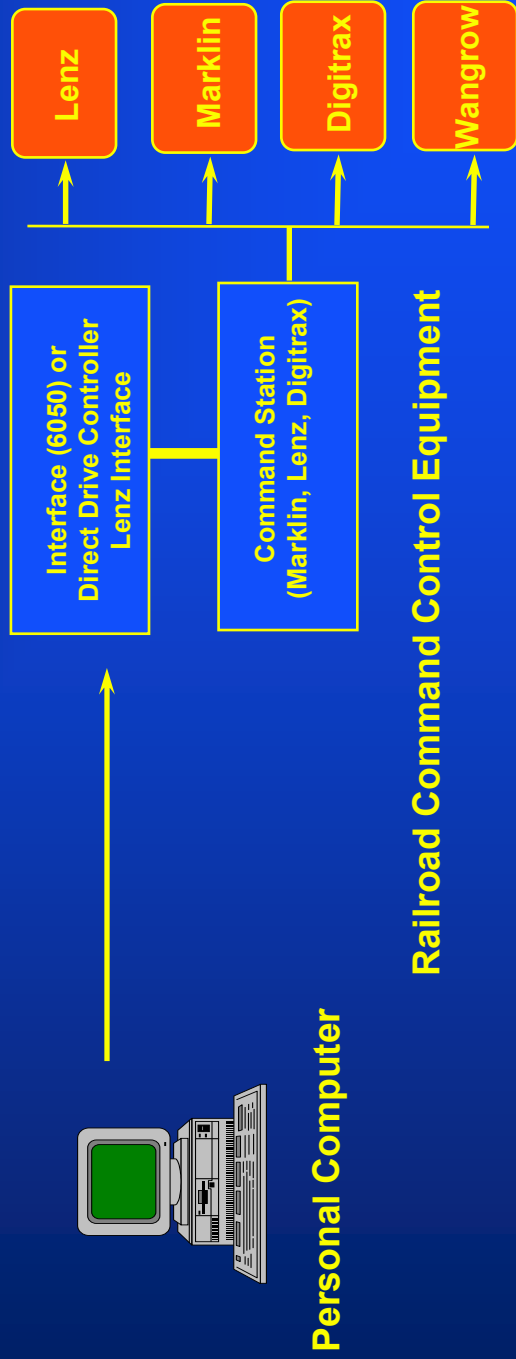
Engine Commander TM 2

**KAM Industries
Hillsboro Or.**



Railroad Requirements

- Must have NMRA DCC
- Two type of interfaces supported
 - PC compatible serial interface (9600 - 19.2K)
 - See <http://kam.rain.com>

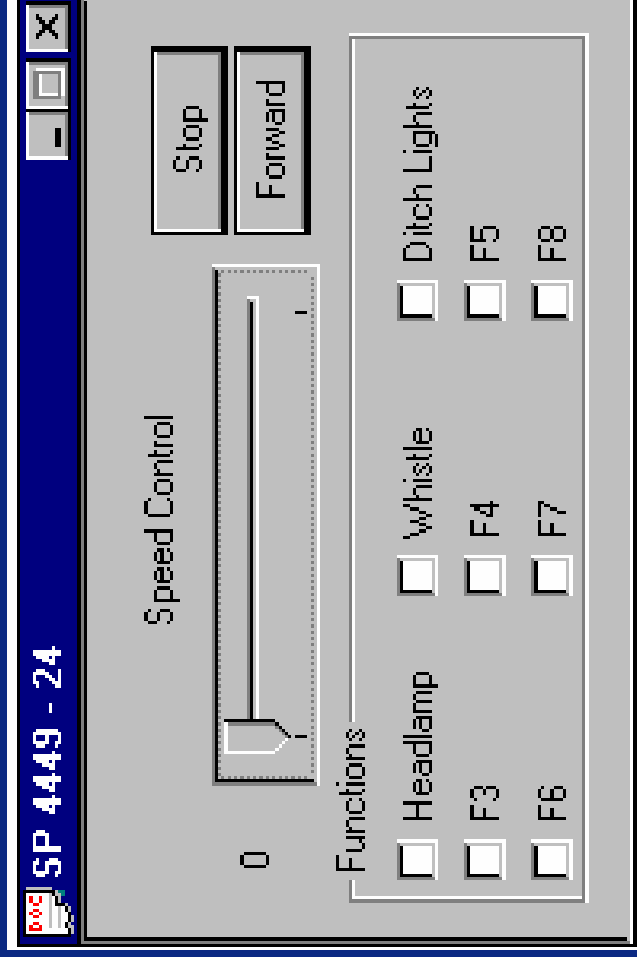


Engine Commander TM 2

- **Supports Multiple DCC vendors**
 - LENZ - Digital Plus LI-100
 - Wangrow - System One
 - Northcoast Engineering - Master Series
 - Digitrax - Loco net MS-100
 - Marklin - 6050/6023
 - NMRA - TP 9.2.5 serial interfac
 - EasyDCC in October
- **Network enabled!**



Easy to use Interface



KAM's Philosophy

- **Computer Monitored**
 - the computer is a tool of the modeler
 - the computer is used to manage events
 - the computer does not control!

EngineCommander™ is the Tool for DCC railroads



PC Hardware Requirements

**If your PC runs Windows 95/NT
then you can run
EngineCommander™**

**Now Supporting
Multiple Command Stations (up to 10)
Networked clients**



Network Support

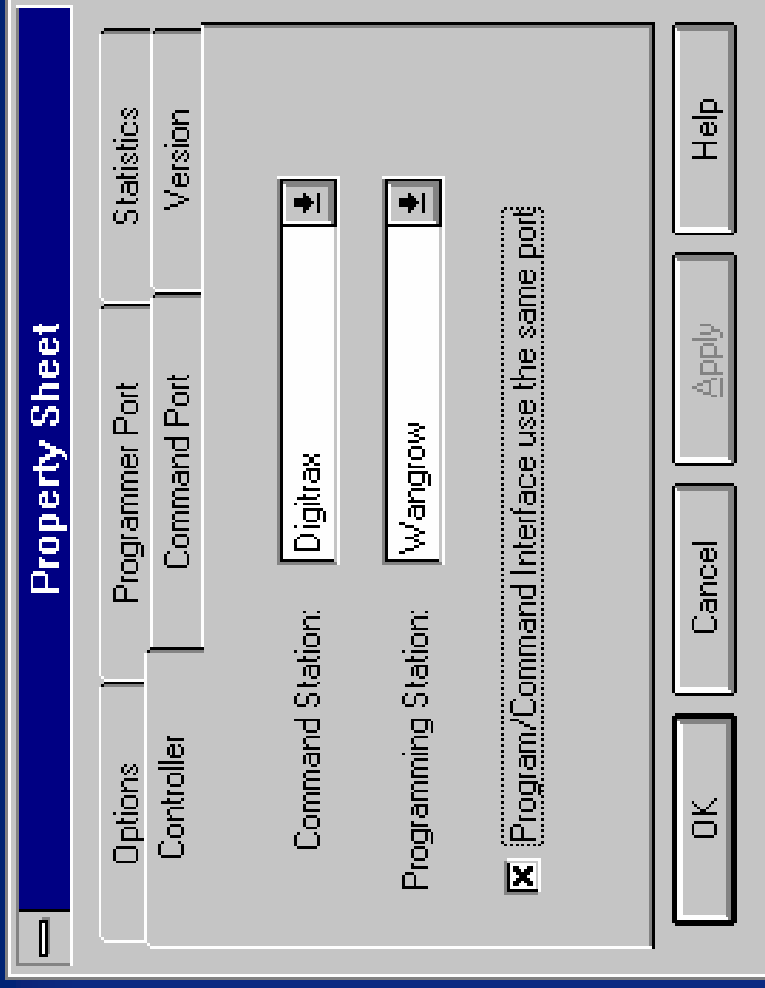
- **Distributed Network Support**
 - Multiple client computers
 - Multiple command stations



Easy movement between Divisions



Fully Configurable



Select multiple command stations



Configurable decoders

**Easy to use decoder wizards!
You decide how to set up your
locomotive!**



Set up Mobile decoders!

Creating a new Locomotive

The following information is necessary to create a locomotive.
All data fields must be completed before you can select OK.
This information may be changed later.

DCC decoder model type:

Text description for this locomotive:

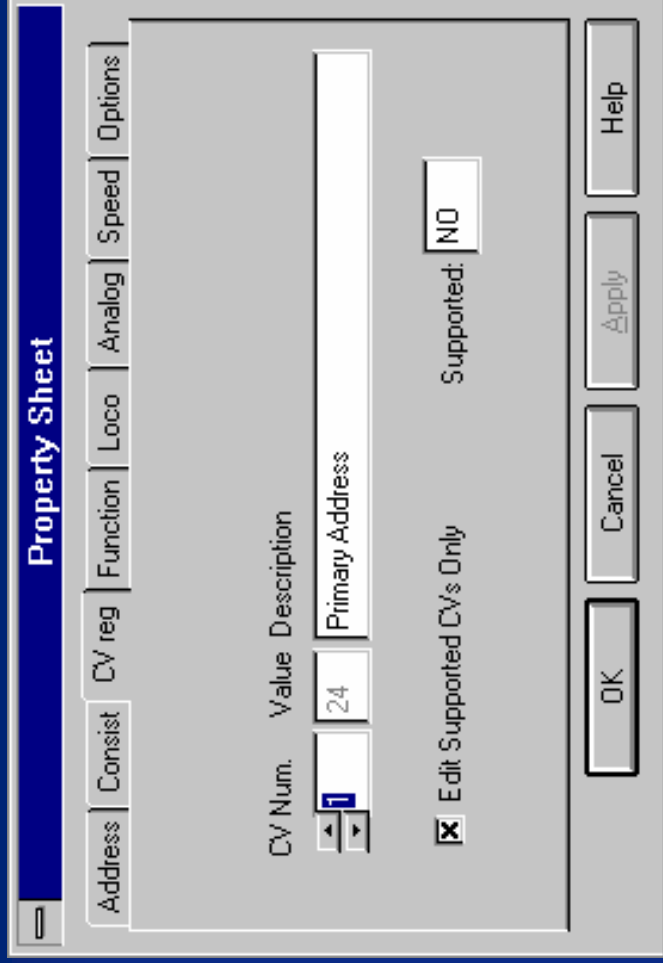
Load CV variables from programming track?

Locomotive Address

Numeric identifier for this locomotive:

Address is always less than 127 (short address)

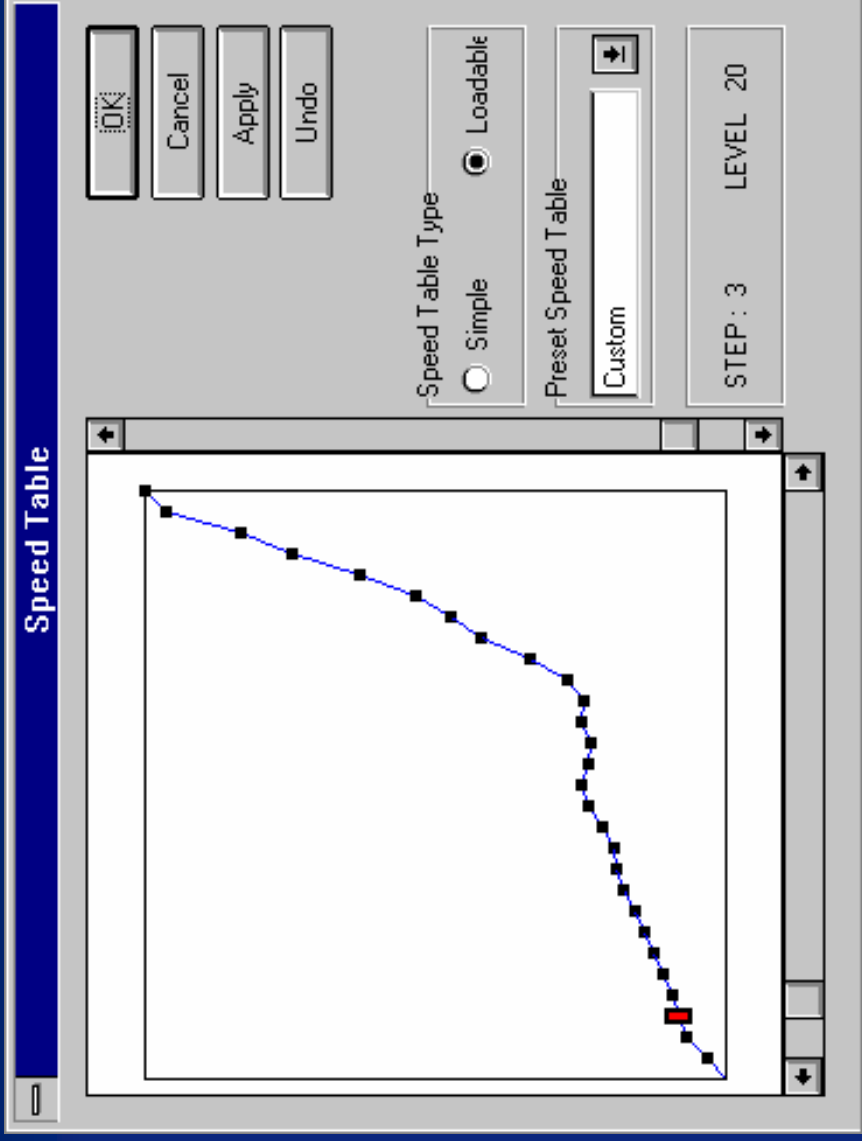
Complete CV access



CV's displayed for easy modifications



Full Speed Table Support



You define the speed table!



Visual Basic Support?

- **What about programming?**
 - Do you support Visual basic?



- **Yes!**
 - You can write Your own programs!



Visual Basic Example

Digitrax VB application

Interface Version Information

08/01/97
 Version: 122 Build: 7/26/97 DLL: TrainTools(tm)
 Version: 113 Build: 7/26/97 DLL: Data Structures
 MFC - Version: 4.21

Locomotive control properties

Speed (NMRA) Forward

Address F0 F2
 F1 F3

Com Channel Unit

Max Logical ports: Max Com ports:

Status of last command

Command Station

Connect Power On Clear Set DCC Addr Send Command

Disconnect Power OFF Reset Version

Error Msg



Visual Basic Example

```
' This first command adds the reference to the TrainTools Interface
Dim EngCmd As New EngComIfc

' Execute the send command to the DCC layout
Private Sub SendCommand_Click()

'Send the command from the interface to the command station
iStatus = EngCmd.KamEngPutFunction(iAddr, 0, On)
iStatus = EngCmd.KamEngPutSpeed(iAddr, iSpeed, iDir)
iStatus = EngCmd.KamCmdCommand(iAddr)

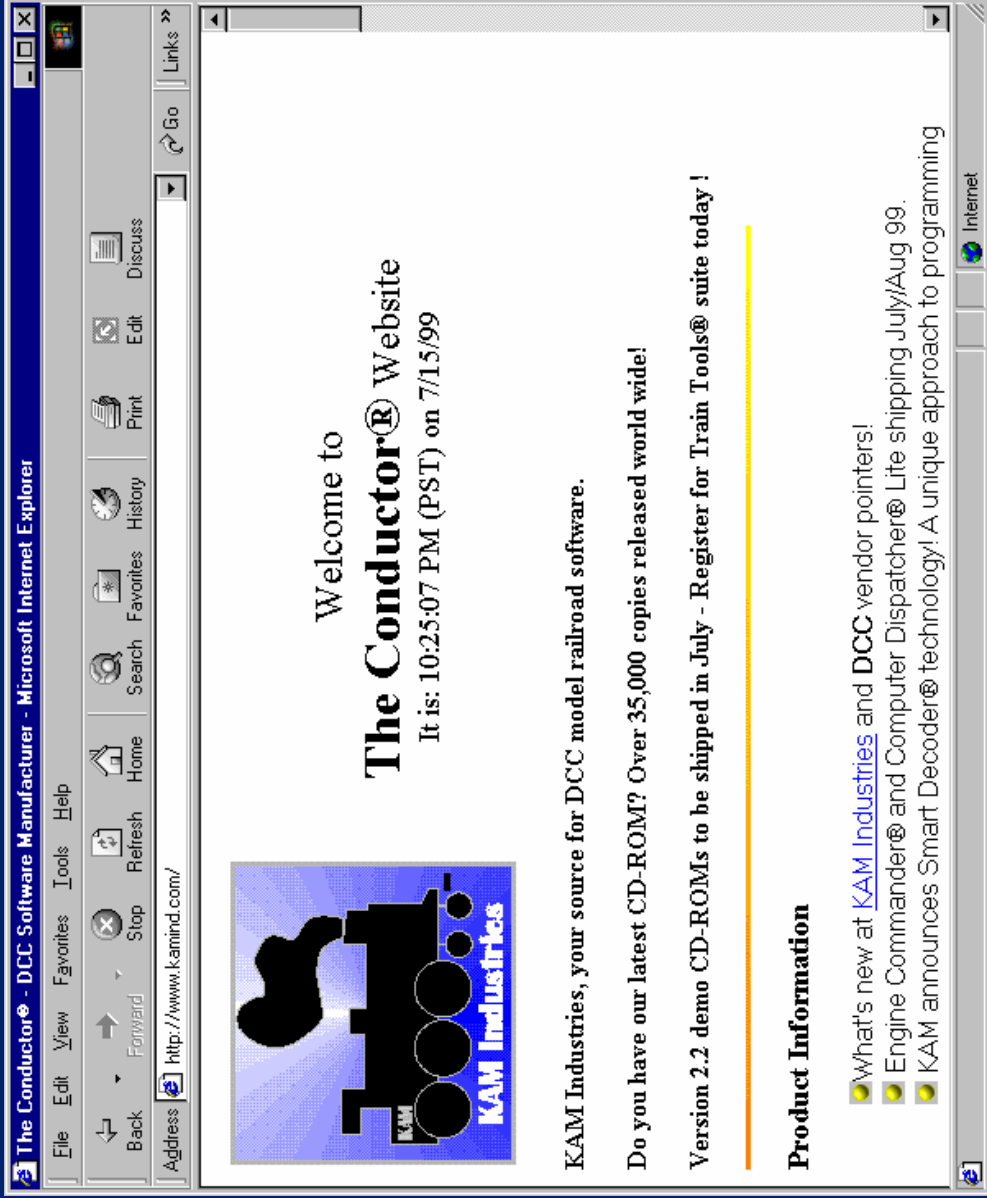
End Sub
```



How do I get support?

- **What about updates?**
 - Where can I get speed tables?
 - Where can I find new decoders?
 - Where can I find samples of Visual Basic and TrainBasic software?

<http://www.kamind.com>



Thank you for visiting KAM